

SCIENCE SPAZA

www.sciencespaza.org



ISAYENSI YE-SEDIMENT: IZINDABA NGODAKA LWASEMANDULO



SHO! KWAZE KWASHISA, NGIFISA NGATHI LINGANA.

IMPELA, SASIVAME UKUBHUKUDA LAPHA BUKA SEKOME KANJANI?



UMKHULU WAMI UTHI LENDAWO YAYIHLUKE KAKHULU. AMANZI AYEHAMBBA AZE AFIKE ESIKOLENI.

HHAYIBO! UMKHULU WAKHO UHLEZI EXOXA IZINDABA.



SANIBONANI! AKUSIYE UMKHULU WENU KUPHELA OXOXA IZINDABA, BEWAZI UKUTHI LOLU DAKA LUNGABUYE LUSITSHELE OKUNINGI NGENDLELA LE NDAWO EVAYIBUKEKA NGAYO?

INI? UDAKA OLUKHULUMAYO? UCHAZA UKUTHINI?

LOLU DAKA SILUBIZA NGE-SEDIMENT. YONKE INGXEENYE YAYO INEZINKOMBA ZOKUTHI INDAWO YAYIBUKEKA KANJANI NGENKATHI LUZINZA LAPHA. AKE NGIKUBONISE.

IZINDABA KWI-SEDIMENT

IZINTO EZIFANA NESIHLABATHI NEMPOVA KUQUKETHE IZIMPAWU EZIVELA ENDAWENI LAPHO ZIVELA KHONA. UMA ISIHLABATHI SIQOKELEKA NGAPHANSI KOMHLABA SAKHA I-SEDIMENT. OSOSAYENSI BEZOMHLABA BAMBA EZINDAWENI EZINODAKA UKUZE BAQOQE ISAMPULA LE-SEDIMENT.

ELEBHU, SIFUNDA LINGQIMBA NGALUNYE LWE-SEDIMENT KANJENGENCWADI KUSUKELA KOLUDALA UDAKA NGENZANSI KUYA KOLISHA NGA PHEZULU KWE-CORE, KANJENGOKUFUNDA INDABA KUSUKA EKUQALENI KUYA EKUGCINENI UKUFUNDA MAVELANA NGENDAWO NEMVELO EDLULE.



Photo: Dr. Jemma Finch



Knowledge is Ncah!



IJUXUZISE NGE-SEDIMENT!



YENZA I-EXPERIMENT UKUBONA UKUTHI UMHLABATHI ESIKOLENI SAKHO NASEKHAYA LAKHO UNANI.



UZODINGA:

- INGILAZI NOMA IZIMBIZANA ZEPULASITIKI EZIBONISAYO EZINEZIVALO
- UDAKA NOMA INHLABATHI EVELA EZINDAWENI EZIMBALWA EZAHLUKENE
- AMANZI
- IRULA INCWADI NEPENI

1 FAKA UDAKA NOMA UMHLABATHI EZIMBIZANENI.



2 YENGEZA NGAMANZI ALINGANAYO KUZO ZONKE IZIMBIZANA.



3 VALA IZIVALO BESE LUXUKUZISA KAHLE. MAKI IZIMBIZA BESE UZIBEKA AMAHORA ANGU-24.



4 **NGOSUKU OLULANDELAYO:** BHEKA IZINGQIMBA EZAKHEKE EMBIZENI NGAYINYE. QHATHANISA AMASAMPULI NGAYINYE. UYAZIBONA IZINGQIMBA NGOKUHLUKANA KWAZO? UKHONA UMEHLUKO EBUDENI BENGQIMBA NGAYINYE KUMASAMPULI AKHO?



KWENZAKALANI LAPHA?

Ngemva kwamahora angu-24 amasampuli akho azozinza abe izendlelelo zobumba (clay), udaka (silt) nesihlabathi (sand). Ubukhulu bengqimba ngayinye kumasampuli akho kuzokunikeza umbono wohlobo lwenhlabathi onayo.

Ososayensi bezomhlaba basebenzisa izindlele ezahlukene, njenge le-experiment okade uyenza, ukuFunda ngenhlabathi nokuthi imvelo yayibukeka kanjani esikhathini esidlule.

Ukungabikho bezinhlamvu zomhlabathi busitshelani? Izinhlamvu ezinkulu njengesihlabathi noma amatshane ziyasinda Futhi mhlawumbe zisuke zigugulwe ngamanzi, zinika ososayensi okuthile mayelana nezimvula ngeleso sikhathi.



KEY

- = UBUMBA
- = UDAKA
- = ISIHLABATHI

ISIHLABATHI

0-10% UBUMBA
0-10% UDAKA
80-100% ISIHLABATHI

UDAKA

10-30% UBUMBA
30-50% UDAKA
25-50% ISIHLABATHI

UBUMBA

50-100% UBUMBA
0-45% UDAKA
0-45% ISIHLABATHI



This work is licensed under the Creative Commons Attribution-NonCommercial-NoDerivatives 4.0 International License. To view a copy of this license, visit <http://creativecommons.org/licenses/by-nc-nd/4.0/>.



UKULUNGISELELA IKUSASA NGOKUBHEKA INKATHI ENDLULE

Ososayensi be-Palaeo (palaeo = okwedlule) bangakha izithombe zokuthi indawo yayibukeka kanjani esikhathini eside esidlule ukuze kubonakale ukuthi yashintsha kanjani ngokuhamba kwesikhathi.

Lokhu kubalulekile ukulungiselela izinselelo zokuguquguquka kwesimo sezulu esibhekene nazo manje.



Photo: Torsten Haberzettl



Photo: Magnus Schult

IMIKHAKHA



UDarryl Dreyer

uthishela wezemvelo e-West Coast Fossil Park. UDarryl usiza abavakashi epaki baqonde ukuthi ziyini izinsalela zamathambo (fossils), zakheka kanjani futhi singafundani kuzo. "Uma siqonda ukuthi sixhumene kanjani nendawo esikuyo kusinika umqondo wokukhathalelana ngokwengeziwe sisodwa kanye nemvelo."



IZIXHUMANISI ZEKHARIKHULAMU

- *Isayensi Yezempilo Amabanga 10-12*
Ukukhuluka, ushintsho kanye nenqubeko: Umlando ngempilo emhlabeni;
Isifundo zezemvelo:
I-Biosphere kuya ku-ecosystems
- *Isayensi Yemvelo Amabanga 7-9*
Umhlaba njengohlelo: Umjikelezo wamadwala; Umkhathi

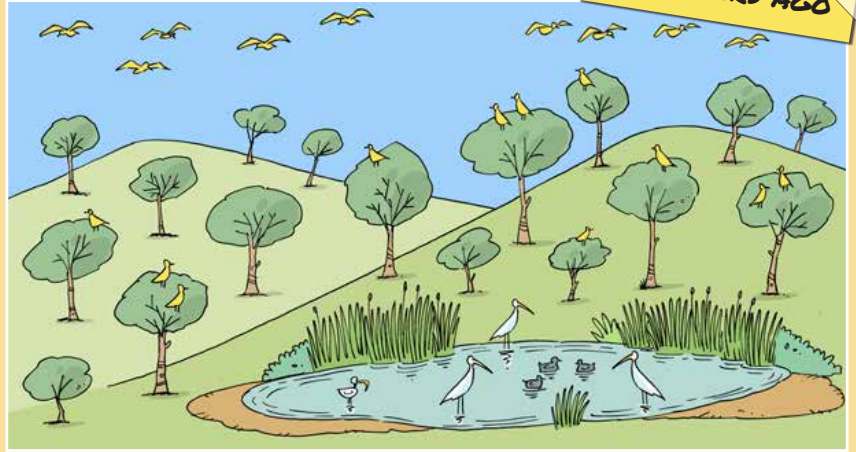
Knowledge is Ncah!



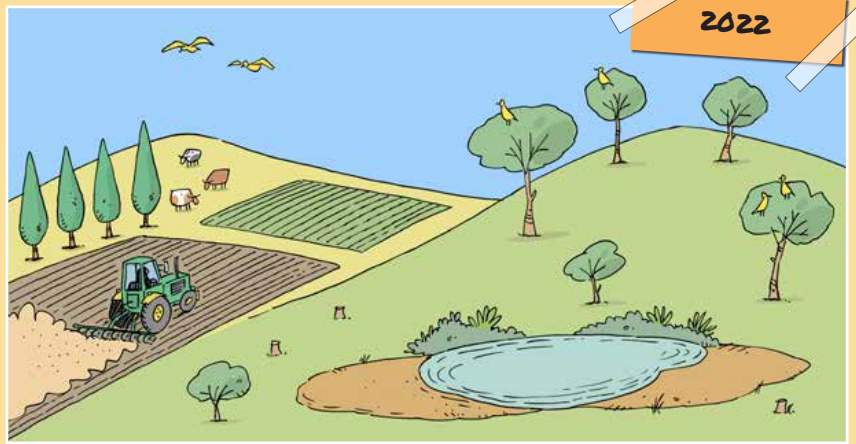
THOLA UMEHLUKO

IZINDAWO ZIYASHINTSHA NGOKUHAMBA KWESIKHATHI. UYAWUBONA UMEHLUKO PHAKATHI KWALEZITHOMBE EZIMBILI?

CABANGA NGAkho.
XOXISANA NEQEMBU
NGALOKHO OCABANGA UKUTHI
KUBANGELE IZINGUQUKO
KULESITHOMBE.



1000 YEARS AGO



2022

Izimpendulo: 1. Uqandaganda nedawo omdawo yokulima; 2. Izilahlia ezimbwa; 3. Izinyoni ezimbwa ezisemoyeni nasezihlahleni; 4. Izinyoni zasemanzini zahamba; 5. Ukunciphisa kwamanzi nodaka olwengeziwe; 6. Uhlubo olusha lwezithombo eduze nepulazi kanye nasemanzini.

ZIQALELE EYAKHO I -SCIENCE SPAZA

Ingabe ufuna ukuziqalela elakho iqembu lescience esikoleni sakho?
Sithumelele le mininingwane elandelayo, i-Science Spaza izothintana nawe.

Isikole: _____

Igama: _____

Inombolo yocingo: _____

i-email address: _____

ikheli lendawo: _____

Visit www.sciencespaza.org, email info@sciencespaza.org, SMS or WhatsApp us on 076 173 7130 or write to us at PO Box 22106, Mayor's Walk, 3208.

COMPETITION ALERT!

SITHUMELELE IZITHOMBE ZAKHO ZE-
SEDIMENT EXPERIMENT YAKHO KANYE
NEYAKHO IMICABANGO MAYELANA
NENDLELA IZINDAWO EZISEDUZE KWAKHO
EZISHINTSHE NGAYO NGOKUHAMBA
KWESIKHATHI. SITHUMELE IZIMPENDULO
ZAKHO KU-076 173 7130 NGE-
WHATSAPP US UBE SETHUBENI LOKUWINA
IMIKLOMELO!*



*top 5 entries will be
chosen to win a prize



Leli phepha lokusebenzela limele imizamo eyiqoqo ehlanganiswe ndawonye ngabahlanganyeli be-"Train-ME2 connect 2021 summer school". I-Train-ME2 Connect iyisinyathelo sokuqeqesha esiqalwe kuphrojekthi yeGerman-South Africa ethi "Tracing Human and Climate impacts in South Africa" (TRACES) okuyinhlangano yamazwe ngamazwe ehlanganisa abacwaningi bemikhakha ehluahlukene abaxhaswe ngemali ngaphansi kohlelo i "Science Partnerships for the Adaptation to Complex Earth System Processes" (SPACES II) lwe German Federal Ministry of Education and Research (BMBF).

Science Spaza is an initiative of research communication specialists Jive Media Africa in partnership with the Yazi Centre for Science and Society in Africa, a registered Non-Profit Company and Public Benefit Organisation. This work is licensed under the Creative Commons Attribution-NonCommercial-NoDerivatives 4.0 International License. To view a copy of this license, visit <http://creativecommons.org/licenses/by-nc-nd/4.0/>.



UNIVERSITÄT GREIFSWALD
Wissen lockt. Seit 1456

