

SCIENCE SPAZA

www.sciencespaza.org



INZULULWAZI NGEENTSALELA: INTSOMI NGODAKA



YHO, KUSHUSHU. NDINQWENELA UKUBA INETHE IMVULA KANCINCI.

EWE, SASISANDULA KUQUBHA APHA, JONGA NGOKU UKUBA KOME NJANI.



UTATOMKHULLU WAM UTHI LENDAWO YAYOHLUKE KAKHULLU KWINKANGELEKO. AMANZI AYEHAMBABAYOKUFIKA ESIKOLWENI!

ASOZE! UTATOMKHULLU WAKHO USOLOKO EBALISA AMABALI.



MOLWENI BAHLOBO. ASINGOTATOMKHULLU WAKHO YEDWA OBALISA AMABALI. BENISAZI UKUBA OLUDAKA NALO LUNAKO UKUSIBALISELA LUKHULLU NGENKANGELEKO VALENDAWO KWIXESHA ELIDLULILEYO?

INTONI? UDAKA OLUTHETHAYO? UTHETHA UKUTHINI?

OLUDAKA SILUBIZA NGOKUBA ZIINTSALELA. VONKE INTO NGOLUDAKA IKUNIKA UMFANEKISO-NGQONDWENI OKANYE INTLIVA MALINGA NENKANGELEKO YENDAWO XAYAYISEKEKA.

AMABALI NGEENTSALELA

IMPAHLA ECOLEKILEYO EFANA NESANTI KUNYE NOMUNGU IQULATHE IMIQONDISO ESUKA KOKUSINGQONGILEYO MALINGA NEMVELAPHI YAKO. NJENGOKUBA IQOKELELANA EMHLABENI, YENZA OKANYE ISHIYA IINTSALELA. IZAZINZULU ZOMHLABA ZIGRUMBA KWIINDAWO EZINODAKA UKUQOKELELA ISAMPULI VEENTSALELA.

ELEBHU SIFUNDA UMALEKO NGAMYE WEENTSALELA OKU KWENCWADI, UKUSUKELA KOLONA DAKA LUDALA EMAZANTSI UKUYA KOLONA DAKA LUTSHA NGAPHEZULU, OKWE KWEBALI, UKUSUKELA EKUQALENI UKUYA EKUGQIBELENI. OKU SIKWENZELA UKUFUNDA MALINGA NENKANGELEKO YOKUSINGQONGILEYO KWIXESHA ELIDLULILEYO.



Photo:
Dr. Jemma Finch



Knowledge is Ncah!



ZIHLUKUHLE NGEENTSALELA!



YENZA UVAVANYO UKUBONA UKUBA VINTONI EKWIINTSALELA ESIKOLWENI SAKHO OKANYE KOWENLI.



LIZAKUDINGA OKU:

- IGLASI OKANYE IJAGI ZEPLASTIKI EZIKHANYAYO, EZINEZIVALO
- UDAKA OKANYE UMHLABA OSUKA KWIINDAWO EZIMBALWA EZAHLUKENEYO
- AMANZI
- INCWADANA, IRULA KUNYE NE INKI YOKUBHALA

1 GALELA UDAKA OKANYE UMHLABA KWI JAGI.



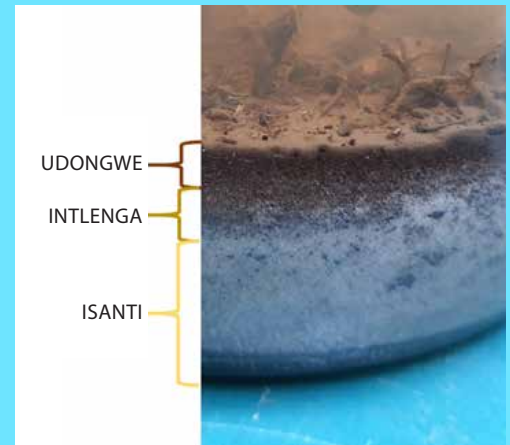
2 GALELA AMANZI. GCWALISA ZONKE IJAGI NGOKULINGANAYO.



3 VALA IZICIKO ZE UHLUKUHLE. ZINOMBOLE IJAGI UZIBEKE ZIHLALE IXESHA ELINGAKA NGEEYURE EZINGAMASHUMI AMABINI ANESINE (24).



4 **NGOSUKU OLULANDELAYO:** JONGA UMALEKO ODALEKILEYO KWI JAGI NGANYE. QHATHANISA OKUFUMENEYO OKANYE IISAMPULI NGOKWAHLIKANA KWEZI JAGI. INGABA UYAWUBONA UMAHLUKO? INGABA UKUJIYA KOKO UKUFUMENEYO OKAYE IISAMPULI KOOMALEKO EYAHLUKENEYO KWIJAGI KOHLUKILE?



INGABA KWENZEKANI APHA?

Emveni kweeyure ezingamashumi amabini anesine, iisampuli zizakujika zikunike umgangatho wodongwe, oworhexe kunye nowesanti. Ukujiya komgangatho ngamnye kwii sampuli zakho kuza kuFuneka imfanekiso-ngqondweni okanye intlava yokuba loluphi uhlobo lweentsalela onalo.

Izazinzulu okanye iinzululwazi zomhlaba zisebenzisa iindlela ezahlukeneyo, ngokuPana novavanyo olu ugqiba kulenza, ukufunda malunga neentsalela kunye nenkangeleko yendawo engqongileyo, kwixesha elandulelayo okanye elidlulileyo.

Ingaba ubungakanani bamagaga weentsalela kusixelela ntoni? Amagaga amakhulu aPana nesanti okanye igilabile anobunzima kwaye ahlambekileyo ngamanzi, axelela izazinzulu okanye iinzululwazi malunga nobunjani bemvula eyayisina ngeeloxesha.



- KEY**
- = UDONGWE
 - = INTLENGA
 - = ISANTI

ISANTI	UDAKA	UDONGWE
0-10% UDONGWE	10-30% UDONGWE	50-100% UDONGWE
0-10% INTLENGA	30-50% INTLENGA	0-45% INTLENGA
80-100% ISANTI	25-50% ISANTI	0-45% ISANTI



This work is licensed under the Creative Commons Attribution-NonCommercial-NoDerivatives 4.0 International License. To view a copy of this license, visit <http://creativecommons.org/licenses/by-nc-nd/4.0/>.



UKULUNGISELELA IKAMVA NGOKUJONGA IXESHA ELIDLULILEYO

Izazinzulu okanye iinzululwazi eziphanda ngexesha elidlulileyo ziyakwazi ukwakha imifanekiso ebonakalisa ukuba indawo yayikhangeleka njani kwixesha elidlulileyo, ukwenzela ukubona ukuba itshintshe njani ngokuya kuhamba ixesha.

Oku kubalulekile ukusancedisa silungiselele utshintsho kujikajiko lwemozulu kunye nemicelimngeni esijongene nayo ngelithuba.



Photo: Torsten Haberzettl



Photo: Magnus Schult

IMISEBENZI



UDarryl Dreyer

ngumhlohli wezendalo e West Coast Fossil Park.

UDarryl unceda iindwendwe eziza kule paki ukuba ziqonde ukuba ziintoni iifosili, zenzeka njani, kwaye singafunda ntoni na kuzo. "Xa siqonda ukuba sinxulumene njani nokusingqongileyo isinika ukukhathala okanye inkathalo komnye-nomye kunye nendalo".



AMAKHONKCO E KHARITYHULAM

- Inzululwazi ngobomi amabanga 10-12

Iyantlukwano, utshintsho nenkqabela: Imbali ngobomi emhlabeni;

IziFundo zokusingqongileyo:
IBiosphere kunye ne nkqubo yempilo

- Inzululwazi ngendalo amabanga 7-9

Inkqubo yomhlaba: Umjikelo wamatye; Umoya

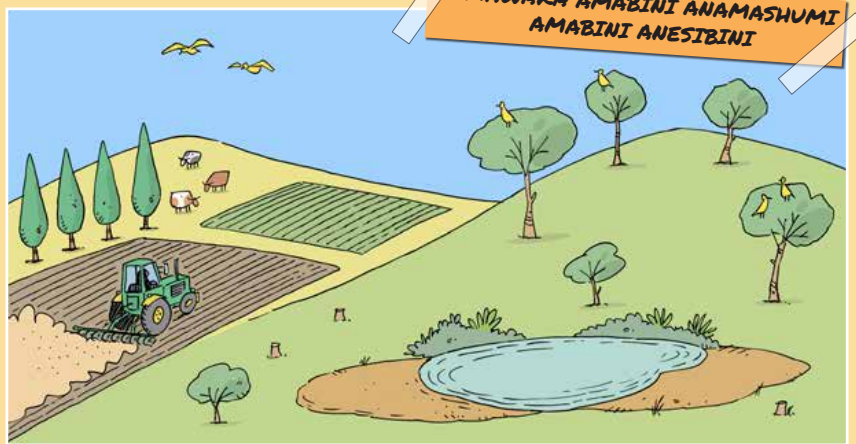
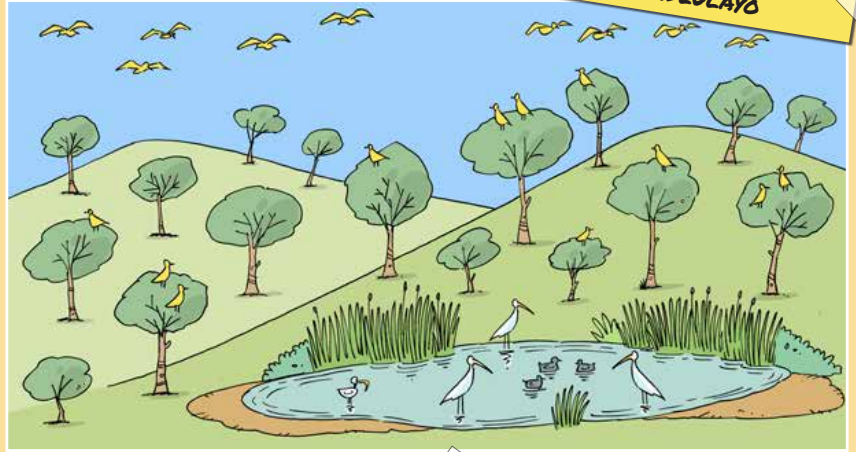
Knowledge is NCAW!



CHONGA IYANTLUKWANO

INDAWO ZIYATSHINTSHA NGOKUYA KUHAMBA IXESHA. INGABA UNGAKWAZI UKUCHONGA IYANTLUKWANO PHAKATHI KWALEMIFANEKISO MIBINI?

YICINGE LENTO:
YIBANENGXOKO YEQELA MALUNGA NOKO OCINGA UKUBA KWENZA UTSHINTSHO KUMFANEKISO.



Iimpindulo: 1. Iiteleke kunye nomhlaba wokukwela ezolimo; 2. Imithi embalwa; 3. Iintaka zamanzini zahamba; 4. Iintaka zamanzini kunye nasemithini; 5. Ukungqongophala kwamanzini kunye nodaka olunzini; 6. Uhlaba olutsha lwezityalo kufutshane nendawo yokukwela ezolimo.

ZIQALELE EYAKHO IVENKILE YENZULULWAZI

Uyafuna ukuqala iqela lenzululwazi esikolweni sakho? Sithumelele ezinkcukacha zilandelayo, ivenkile yenzululwazi izakuxhulumana nawe.

Isikolo: _____

Igama: _____

Inimbolo yomnxeba: _____

Idilesi ye emeyili: _____

Idilesi yokuhlala: _____

Ndwendwela u www.sciencespaza.org, Imeyili info@sciencspaza.org, Thumela umyalezo okanye u wathsaphu ku 076 173 7130 okanye isibhalele incwadi ku PO Box 22106, Mayor's Walk, 3208.

ISILUMKISO SOKHUPHISWANO

SITHUMELELE IZITHOMBE ZEENTSALELA ZOVAVANYO KUNYE NEENGCIINGA ZAKHO NGOTSHINTSHO KOKUKUNGQONGILEYO NGOKUYA KUHAMBA IXESHA. THUMELA IIMPENDULO ZAKHO KWIKHASI LONXIBELELWANO U WHATSAPP KU 076 173 7130 UZIBONE USETHUBENI LOKUPHUMELELA AMABHASO KANOKUTSHO.*

*Amangenelo amahlanu anqenqeka phambili ayakukhethwa nje ngaphumeleleyo ze anikwe ibhaso.



Eliphepha lomsebenzi limele imizamo yembumba eqokelelwe ze yadityaniswa ngabathathi-nxaxheba be Train-German connect 2021 summerschool. Train-ME2 connect linyathelo loqeqesho oluphuma ku German-South Africa Project " Umkhondo weempembelelo zoluntu kunye notshintsho kwimozulu e Mzantsi Afrika" (TRACES), kunye ne namazwengamazwe ngaphakathi koqeqesho nentsebenziswano kunye nabaphandi abaxhaswe phantsi kwe "ntsebenziswano yenzululwazi eyenzelwe ukuziqhelanisa neenkqubo ezinobuzaza zomhlaba" (SPACES II) Inkqubo ye German Federal Ministry of Education.



UNIVERSITÄT GREIFSWALD
Wissen lockt. Seit 1456



Science Spaza is an initiative of research communication specialists Jive Media Africa in partnership with the Yazi Centre for Science and Society in Africa, a registered Non-Profit Company and Public Benefit Organisation. This work is licensed under the Creative Commons Attribution-NonCommercial-NoDerivatives 4.0 International License. To view a copy of this license, visit <http://creativecommons.org/licenses/by-nc-nd/4.0/>.

